



During school closure, if you need to contact me, please ring the school office or email me directly.

Thank you

Miss Pope

head.westfield@halton.gov.uk



Lockdown Newsletter

Continuing to improve our remote provision

This week, our remote provision looks a little different. To streamline the morning, we are posting a Maths and an English task. The English task will combine reading/writing activities instead of separate activities. At lunchtime, we are posting the afternoon task. I think this will look and feel more manageable for all. We are also encouraging 1-1 reading at home using Bug Club/book from home and Times Tables Rockstars.

If you would like a 'real' book, call in at the school office on your daily walk to pick one up.

This week is Children's Mental Health week. The afternoon activities will be small tasks that will promote the 5 ways to well-being.

The theme for this year is 'Dress to Express' and I am inviting you to email a photo of your child/ren wearing something that tells me about them. For example, sporty, bright colours or cosy and comfy like me!



Disney, princess, glitter and balloons.

Take care, Miss Pope.



Summer, Minnie and slippers.



Football and Wales.

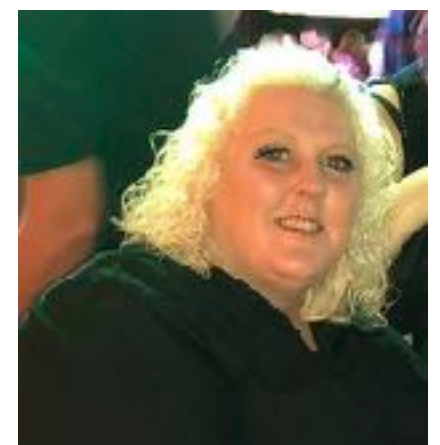


Being me!



Cosy and comfy.

Our staff, dressing to express.
Send our photos in by email to
sec.westfield@halton.gov.uk



Being you!



Westfield Primary School



Star of the week 22nd January 2021

Congratulations to the following children who received star of the week.

Willow - Everly Hodgkinson

Cherry - Sophia Austin

Maple - Brent Harvey

Larch - Layla O'Neill

Birch - Lexie Fagan

Oak - Alfie Edwards

Lunchtime award - Lower key worker bubble

Star of the week 29th January 2021

Congratulations to the following children who received star of the week.

Willow - Michael Hayes

Cherry - Harper Sanderson

Maple - Ellie McGuire

Larch - Layla O'Neill

Birch - Ella Jackson

Oak - Oscar Owen

Lunchtime award - Upper key worker bubble



Online learning Attendance 22nd January 2021

Willow 76%

Cherry 87%

Maple 65%

Larch 88%

Birch 91%

Oak 81%

Well done to Birch class with 91%

Online learning Attendance 29th January 2021

Willow 79%

Cherry 88%

Maple 68%

Larch 91%

Birch 93%

Oak 86%

Well done to Birch class with 93%

IMPORTANT - Children need to sign the register on Google Classrooms by 9:30am each morning.

Parents and Carers

Are you worried about your child?

**Have you got concerns about your child's health
or well-being?**

Do you need support with your child's behaviour or routines?

**Have you got concerns about another family and want to
help?**

**For any help and support, ring the main office
and make an appointment with
Miss Pope, Mrs Havard or Mrs Kochan.**



Promoting independence, individuality and an inquisitive mind.